



Partnerships for Growth

As a regional planning entity, the Highlands Council works in partnership with municipalities and counties to develop programs and planning initiatives that help ensure the long-term health of the region's natural resources and economies.

Funding and expertise is available to support planning in a variety of areas:

- Water Use & Conservation Management
- Stream and Lake Protection
- Wastewater Management
- Sustainable Economic Development
- Redevelopment
- Agricultural Retention
- Agritourism
- Ecotourism
- Green Building/Environmental Sustainability/Alternative Energy
- Transfer of Development Rights



The New Jersey Highlands At a Glance

- Nearly 860,000 acres
- 1,300+ square miles
- Provides drinking water for 70% of New Jersey residents
- 88 municipalities in 7 counties: Bergen, Hunterdon, Morris, Passaic, Somerset, Sussex, Warren
- NJ Highlands Act passed: August 2004
- Regional Master Plan adopted by Highlands Council: July 2008



State of New Jersey

Highlands Water Protection and Planning Council
 100 North Road (Route 513)
 Chester, New Jersey 07930-2322
 (908) 879-6737
 (908) 879-4205 (fax)
www.nj.gov/njhighlands

The New Jersey Highlands
 Water Protection and Planning Council

Planning for the Future of New Jersey's Water

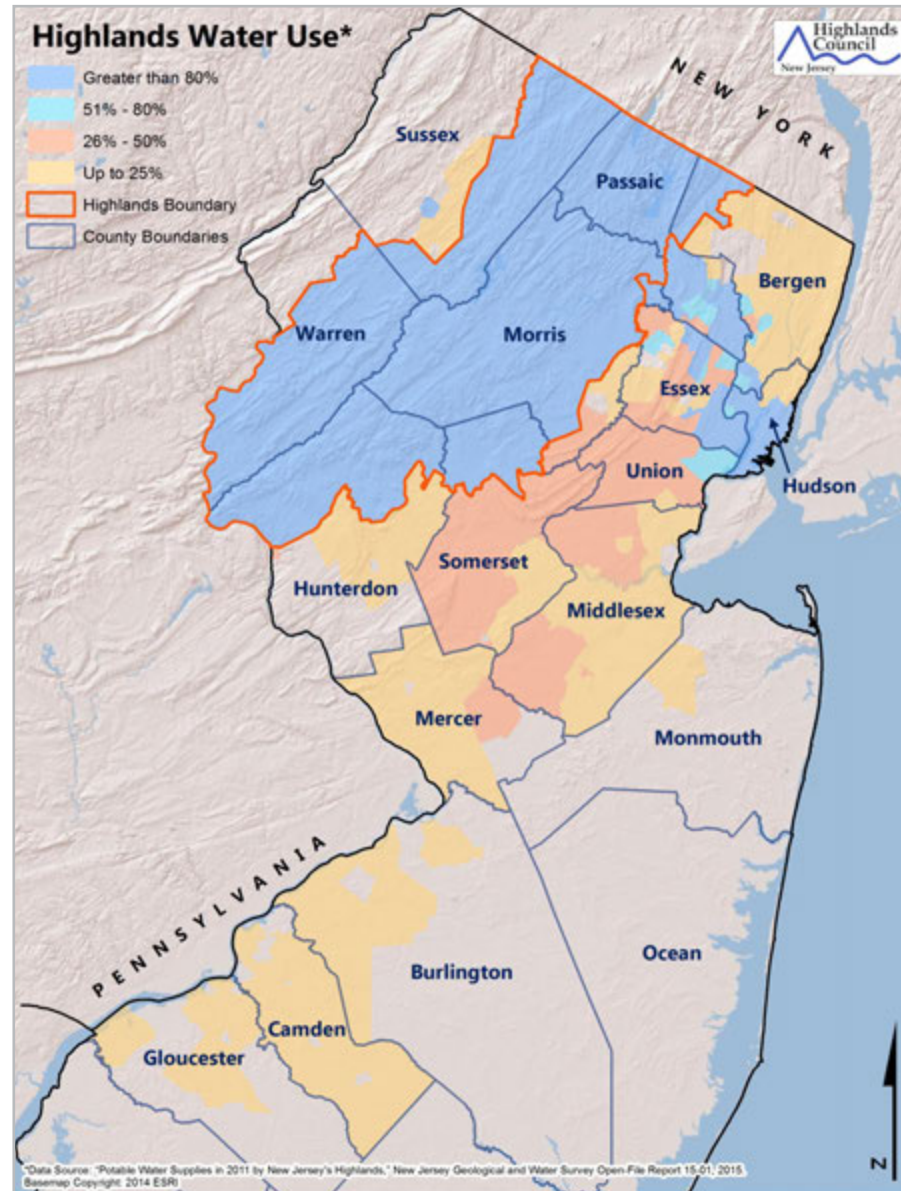


The Highlands Council

The New Jersey Highlands Water Protection and Planning Council holds a view large enough to manage critical issues that cross municipal and county boundaries, while maintaining special expertise in the detailed conditions of the Region. The Council's unique knowledge of Highlands resources and our strong local relationships are key to implementing the required comprehensive approach to land use in the Region.

The Highlands Council was established by the Highlands Water Protection and Planning Act of 2004 (Act). The Act delineated the boundaries of the Highlands Region and required that the Council create a Regional Master Plan (RMP) to guide development in it. The Act divided the Highlands Region into two distinct parts: the Preservation Area, in which conformance with the RMP is required, and the Planning Area in which conformance with the RMP is voluntary.

The 15-member Council created and administers a plan conformance program, authorizes proposed projects, and sets policy on matters related to the Highlands Region. The Council is supported in its efforts by a professional staff of planning, science and GIS experts.



Who's drinking and using Highlands water?

The Highlands Region of New Jersey covers less than 15% of the state's land, but provides drinking water for 70% of its residents. For this reason, the Region was afforded special protections under the 2004 New Jersey Highlands Water Protection and Planning Act. The Highlands Council was established in the Act as a regional planning agency, in the model of the Pinelands Commission and the

former Meadowlands Commission (now part of the Meadowlands Sports and Exposition Authority), and charged with overseeing the protection and stewardship of the natural and cultural resources within the Highlands Region. Because families, farms and businesses all depend on a steady supply of clean water, and because water resources do not follow municipal boundaries, a regional approach is required to protect and conserve the vital natural resources of the Highlands.